

**MONTGOMERY**  
**MIDDLE STEAM MAGNET**

**Back to School**

**Parent Orientation**

**2020 - 2021**

# Agenda

- Introductions
- Opening Via Online Learning
  - 2020-2021 Bell Schedule
- “Welcome Week”
  - First week of school schedule
- Student schedule sample
- Parent engagement opportunities (PTSA, SSC, SGT)
- Updates: Lunch Service, Modernization, etc.
- Questions and answers

# Introductions



# Montgomery's Office Staff



Ms. Trueblood,  
Principal



Mrs. Perdomo-Melendez  
Vice Principal



Ms. Aguirre  
Counselor



Ms. Kehl  
Counselor

# Montgomery's Staff - 6th Grade



Mrs. Corrigan  
English



Ms. Gomez  
History, Spanish



Mr. Holsinger  
Science



Mrs. Bentley  
Special Ed



Ms. Calantropio  
Math



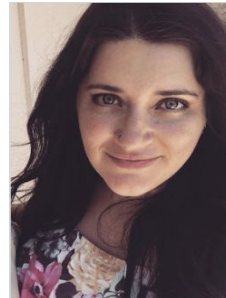
Ms. Kurpiewski  
SpEd



Ms. Brothers  
Physical Ed.



Ms. Burks  
History



Mrs. Bakaly  
ELD

# Montgomery's Teachers - 7th Grade



# Montgomery's Teachers- 8th Grade



SAN DIEGO UNIFIED SCHOOL DISTRICT

# Back-to-School Guide

What to Expect When Returning to School 2020-2021



Superintendent Cindy Marten  
August 31, 2020



# ONLINE LEARNING



Families can expect:

- All students will have daily, live interaction with their teachers via video conferencing in the morning
- Afternoons will be flextime\*
- Students will receive grades quarterly (4 times per year)

Modified Bell Schedule 2020-2021

Period	Modified Day
1	8:15 - 9:29
Break/Passing Period	9:29-9:38
2	9:38 - 10:52
Break/Passing Period	10:52-11:01
3	11:01 - 12:15
Break/Passing Period	12:15-12:24
Lunch	12:24 - 12:54
Break/Passing Period	12:54-1:03
Flextime*	1:03 - 3:12
Dismissal	3:12

\*Flex Time is designated time for students to participate in independent learning at their own pace. This time can also be used to participate in enrichment opportunities, such as extracurricular activities, or for additional support as needed.

# Attendance



- Participate online every day and be on time.
- Teachers will take attendance and will mark absences daily.
- Attendance will be based on both synchronous (in front of teacher) and asynchronous (independent) participation.
- If your student is absent please communicate with your student's teachers.

# Student Schedule Sample

Student Schedule as of 08/27/2020

## Montgomery Middle

Student Student ID Grade Gender Lunch PIN

---

Period/Day	Course	Sec	Course Title	Room	Teacher	Term
1(A)	3596_2	105	GATEWAY TO TECH	306	Prado	S1
2(A)	6006_2	228	SCIENCE 6TH	303	Holsinger	S1
3(A)	1708S_2	16	ENGLISH 6TH SM	160	Corrigan	S1

# Technology & Device Management

If you need assistance with your computer, please call the parent hotline for technology help.

[SDUSD Technology Support for Families](#)

It operates Monday - Friday 8:00am - 5:00pm (619-732-1400). For wifi or hotspot issues call (619) 260-2460, press option 1.

For Chromebook troubleshooting troubleshooting tips click below.

[English](#) | [Spanish](#) .

# Students with Disabilities / Individualized Educational Plans

Students with disabilities will:

- Receive live instruction via video conferencing
- Take part in both whole group and small group instruction with their peers
- Access office hours to connect with teachers if they still have questions or need more support
- Have accommodations, and assistive technology will be provided online as outlined in a student's IEP.

Families can request a meeting with the IEP case manager to review how IEP services will be delivered during online learning.

# LUNCH

Starting on Monday August 31, Grab & Go meals will be served by Montgomery cafeteria staff in the grass area in front of the cafeteria corridor.

Families may pick up meals to go every Monday through Friday, from **12 PM until 2 PM.**

- Please bring your student's school ID, or the Student ID/Password Information card you received with the pick up of Chromebooks, or write your student's name, school and Student ID # on a sheet of paper, and be prepared to hold it out of your car window for verification of school attendance.

[Powerschool.sandi.net/public/](https://powerschool.sandi.net/public/)



# PowerSchool

STUDENTS STAFF PROG

- Distance Learning
- PowerSchool**
- Welcome Back to School Videos 20-21
- Clubs
- Breakfast and Lunch >
- 20 Computer Help / How To >
- 3a Counseling Request

PowerSchool

## Student and Parent Sign In

Sign In Create Account

**Username**

**Password**

[Forgot Username or Password?](#)

**Sign In**



## Designing a Better World, Through Community-Centered, Project Based Learning



✓ New Student Enrollment

📄 Principal's Newsletter

📅 Academic Calendar (20-21)

🏠 Bell Schedule (20-21)

- AUG 26**
  - 8th Grade Textbook Distribution / 8o Grado Distribucion de Libros  
9:00AM - 2:00PM
  - 7th Grade Parent/Guardian Orientation - Zoom  
1:00PM - 2:00PM
  - 7o Orientaciones Para Padres/Tutores En Espanol - Zoom  
2:00PM - 3:00PM
- AUG 27**
  - 7th Grade Textbook Distribution / 7o Grado Distribucion de Libros  
9:00AM - 2:00PM
  - 6th Grade Parent/Guardian Orientation - Zoom  
1:00PM - 2:00PM

🔴 🔴 [More Events](#)

Tweets by @MontyWolves



**Montgomery Middle STEAM Magnet**  
@MontyWolves

Back to School Guide (August 31st) is filled with information for parents, students and educators.  
English - [ow.ly/IAOB50B7PR4](https://ow.ly/IAOB50B7PR4)



# Parent Engagement Opportunities

- **SSC** - School Site Council
  - This team advises the principal regarding school needs and budgeting.
- **SGT** - School Governance Team
  -
- **ELAC** – English Learner Advisory Committee
  - This team advises the principal regarding programs and needs in place to ensure the success of students who are learning English as a Second Language.
- **DAC / GATE DAC** – District Advisory Council
  - Selected members from SSC attend monthly district meetings representing the school, advising the district in planning, implementing, and evaluating compensatory education programs (SpEd, GATE, etc.)
- **PTSA** - Parent-Teacher-Student Association

# Communication

- Principal's monthly calendar and newsletter
- School Messenger phone calls & emails
- Communicate with teachers via email
- Main office & attendance - Elsa Johnson  
[ejohnson@sandi.net](mailto:ejohnson@sandi.net) or google voice (858)633-7081

Share your #MontyPride on Social Media @MontyWolves



# School Safety During the Pandemic

## Office Staff Directory

- Montgomery campus is closed during distance learning. All offices are closed to the public due to continued state health orders
- All communication will take place through temporary Google telephone, email, and our school website

Attendance & Student Records - Elsa Johnson  
[ejohnson@sandi.net](mailto:ejohnson@sandi.net) Google Phone # (858) 633-7081

Counselor all 6th grade & 8th grade ( -- ) Rachele Aguirre  
[raquirre@sandi.net](mailto:raquirre@sandi.net) Google Phone # (619) 894-6525

Counselor all 7th grade & 8th grade (--) Leslie Kehl  
[lkehl@sandi.net](mailto:lkehl@sandi.net) Google Phone # (619) 880 7808

School Nurse - Kathleen Nelson [kdenison@sandi.net](mailto:kdenison@sandi.net)

School Secretary - Miriam Ceron  
[mrodriguez6@sandi.net](mailto:mrodriguez6@sandi.net)

Principal - Sarah Trueblood  
[strueblood@sandi.net](mailto:strueblood@sandi.net) Google Phone # (619) 512-2855

Vice Principal - Myra Perdomo-Melendez  
[mperdomo@sandi.net](mailto:mperdomo@sandi.net) Google Phone # (858) 412-7498

# Montgomery Modernization Project Update

**PARDON OUR DUST...**



**WHOLE SITE MODERNIZATION  
PROJECT COMPLETION**

**FALL 2020**



"The whole difference between construction and creation is exactly this:  
that a thing constructed can only be loved after it is constructed;  
but a thing created is loved before it exists."

Charles Dickens, *Writer*

**M MONTGOMERY  
MIDDLE STEAM MAGNET**





# ACTIVATE YOUR GENIUS!



science



technology



engineering



art



mathematics